



Proactive agriculture



Proactive

Reactive



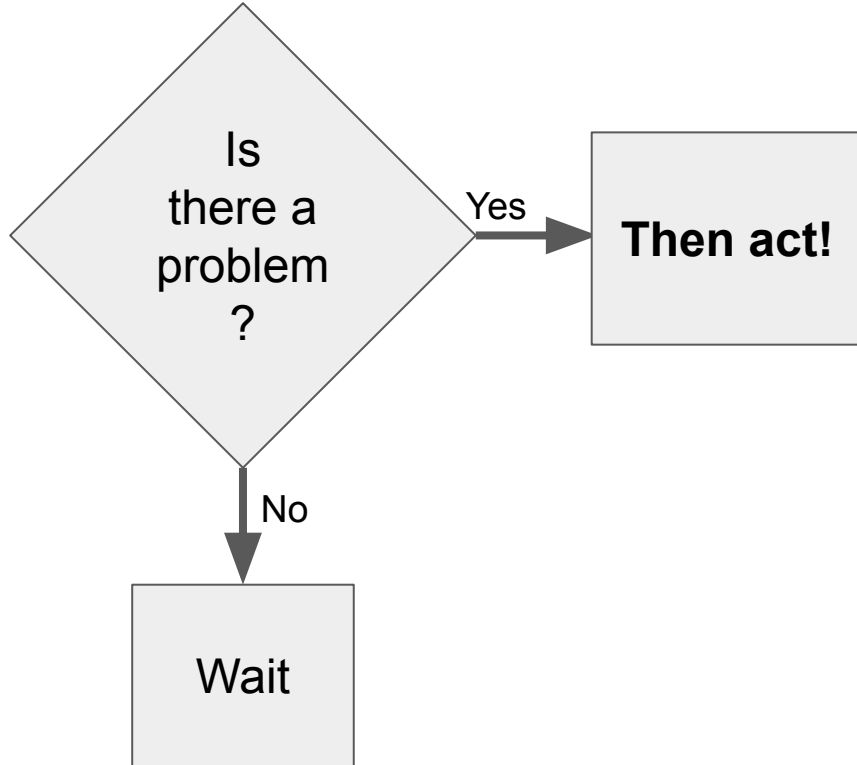
Problem
may arise
here

time



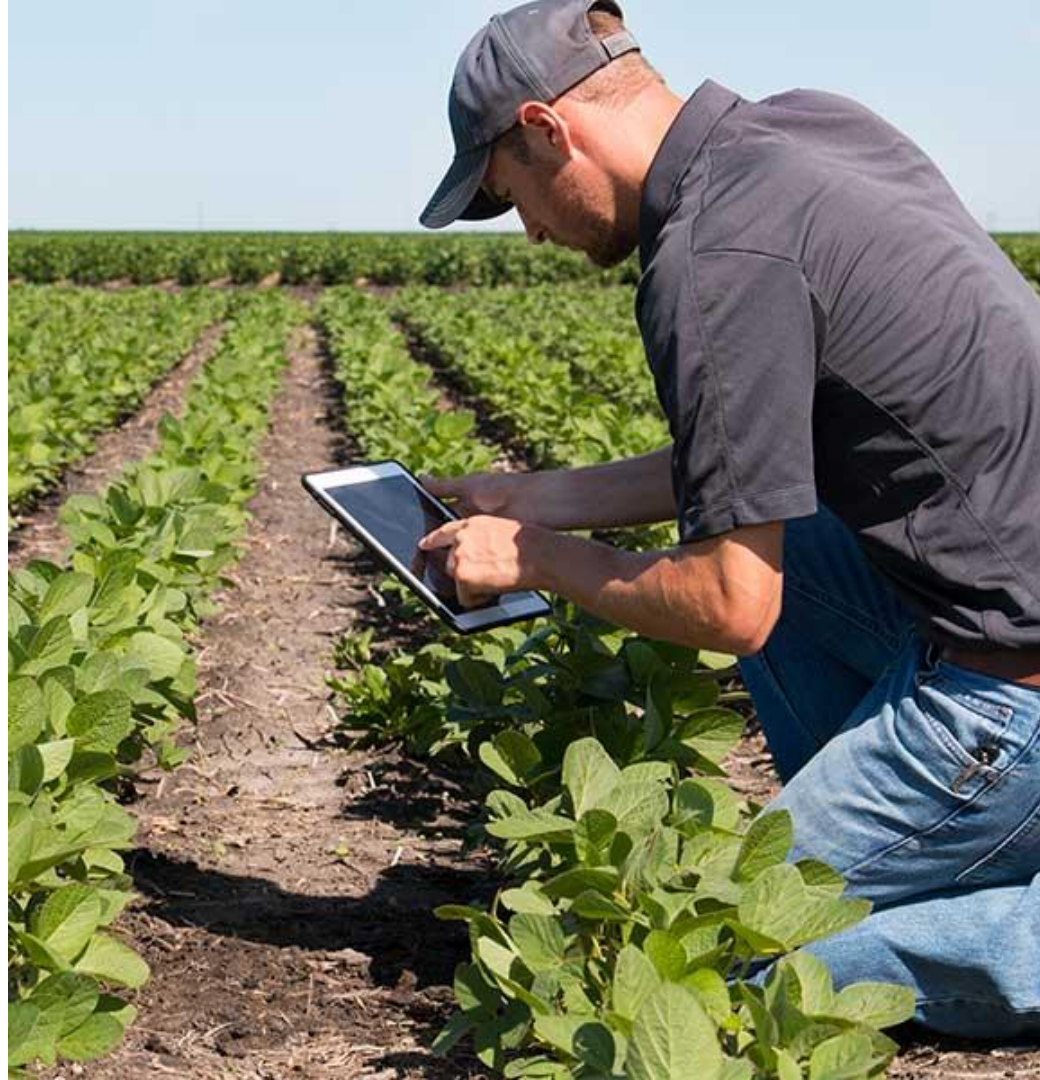
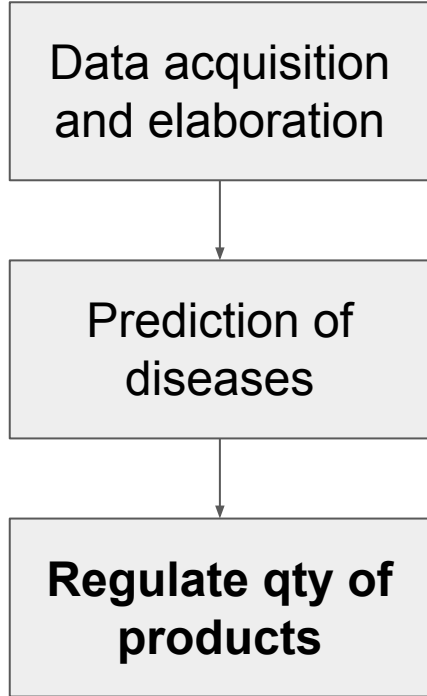
Moving to agriculture...

Reactive approach -> an old story



Moving to agriculture...

Proactive approach -> a modern story



Organic agriculture regulation

The use of pesticides, which may have detrimental effects on the environment or result in the presence of residues in agricultural products, should be significantly restricted. Preference should be given to the application of preventive measures in pest, disease and weed control. In addition, conditions for the use of certain plant protection products should be laid down.

European Commission Regulation 889/2008

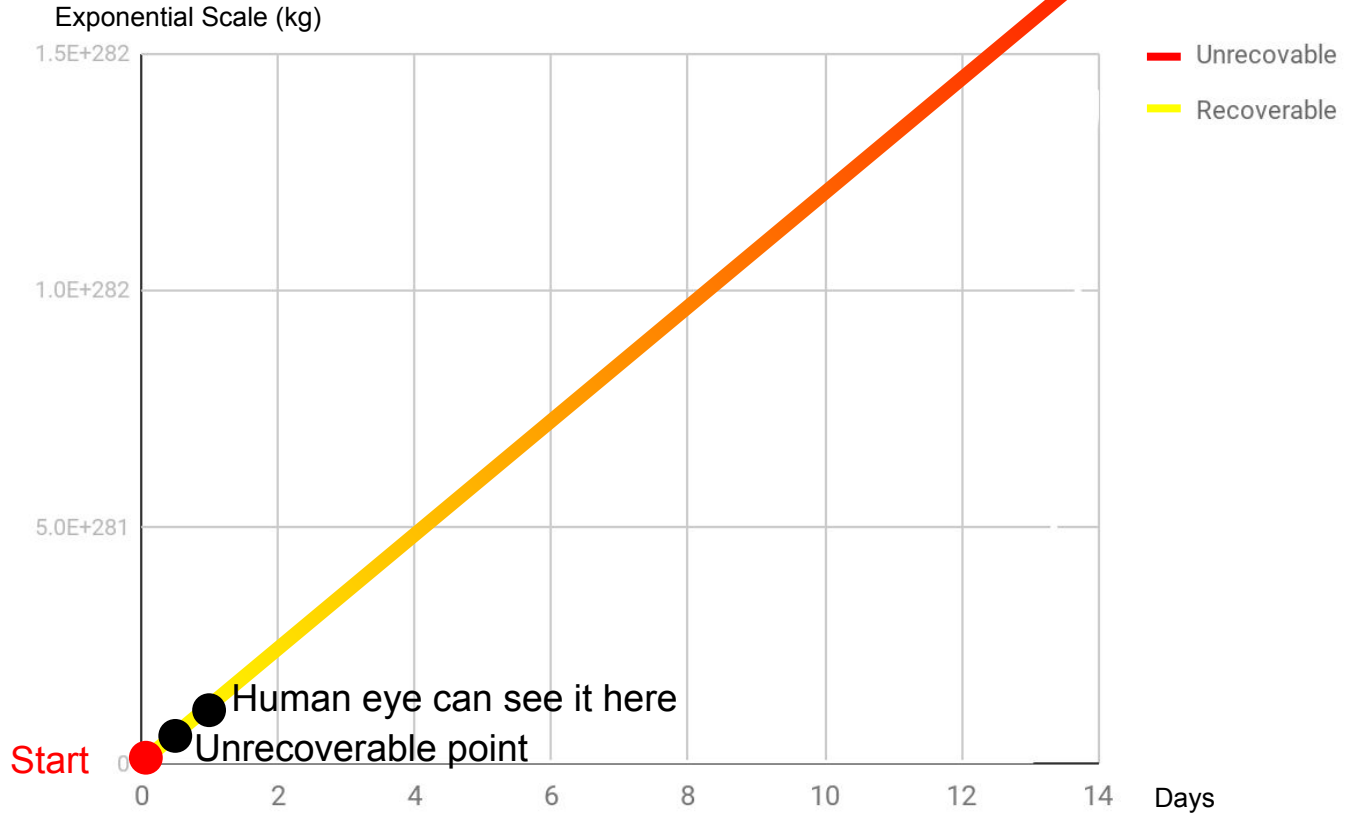
Examples



Seed Treatments

- 40% yield loss
- Human Death
- More probability of disease





Detection

- Corn Aflatoxin
- Loss of all the production
- New technology can help



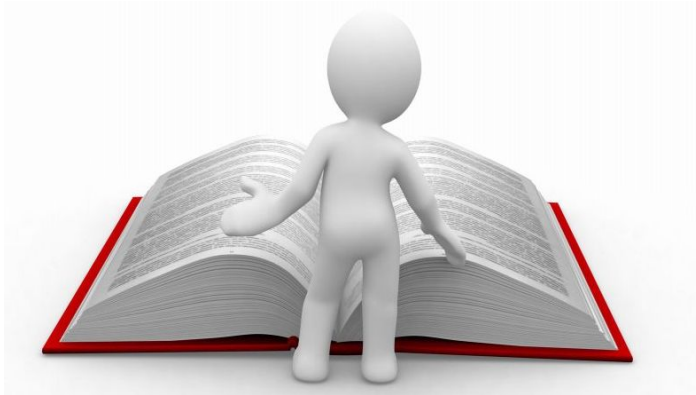
Biochemical

- *Pyricularia grisea* (Rice's fungus)
- Bamboo's oil extract application show a antifungal effect



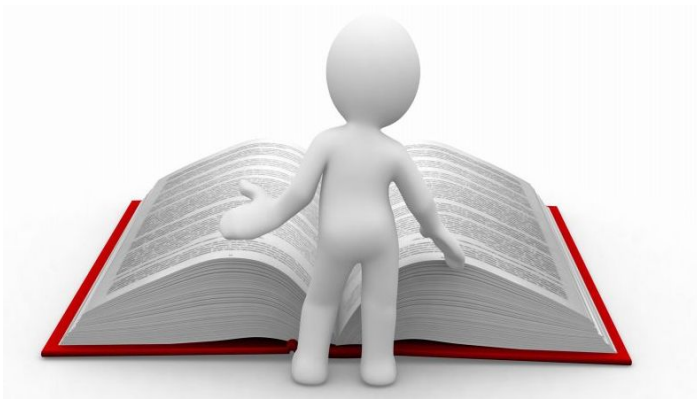
Q&A

Q: Is it true that a proactive approach is more harmful for human health?



A: NO, because reactive approaches use larger quantity and more toxic products

Q: Is it true that GMO are proactive approach to agriculture?



A: Yes, but in a lot of cases GMO is a response to damage caused by reactive approaches

Thank you for your attention



Reference

<https://pastebin.com/n6jNww8f>